

ROOM TO GROW

Smart Living - Smart Space™




An Economic Development Queensland initiative



Image for illustrative purposes only.



Image for illustrative purposes only.

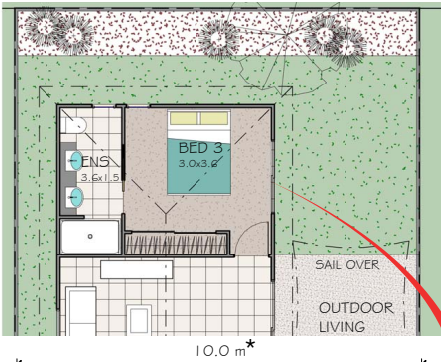
- 2-3 Bed 
- 1-2 Bath 
- 1 Car 

ROOM TO GROW

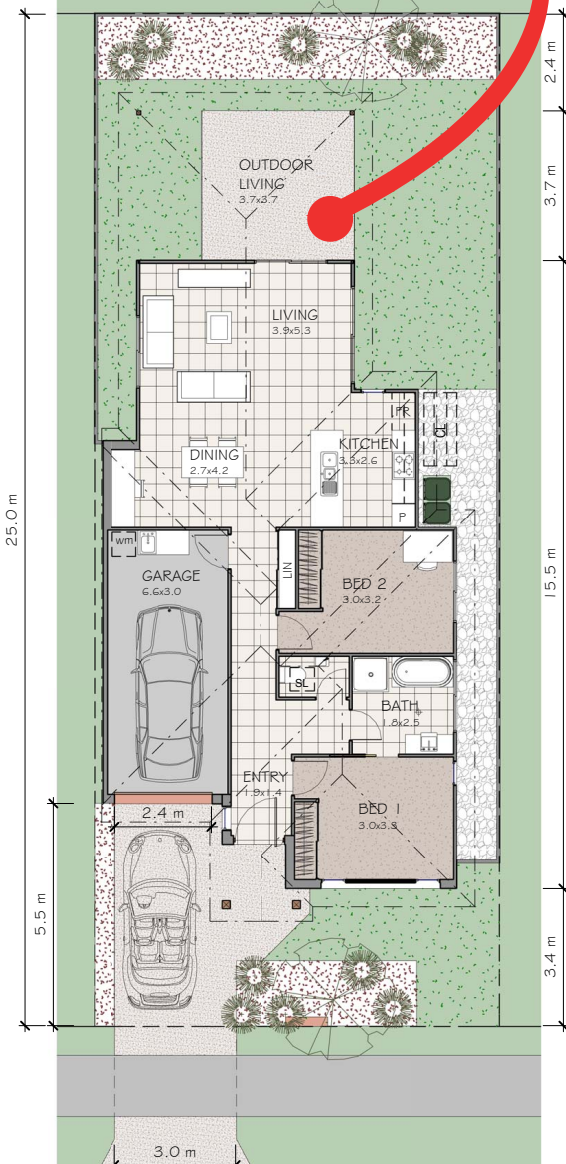
Smart Living - Smart Space™

An Economic Development Queensland initiative

Stage 2



Stage 1



Please note: floorplan not to scale

Intellectual Property Rights remain with Economic Development Queensland (EDQ)
All rights reserved. Correct at time of print 09/15.

Overview

Customers seeking to enter the property market for the first time will certainly appreciate the future flexibility of this home design. Design may be constructed as a 1 or 2-stage build. Consider adding a new master bedroom, ensuite and outdoor space at a later date and turn your 2-bedroom home into a 3-bedroom home.

| | | | |
|-----------------|---------------------|--------|--|
| Living: | 92.2m ² | 2 Bed | |
| Garage: | 21.0m ² | 1 Bath | |
| Outdoor living: | 14.0m ² | 1 Car | |
| Porch: | 2.3m ² | | |
| Total: | 129.5m ² | | |

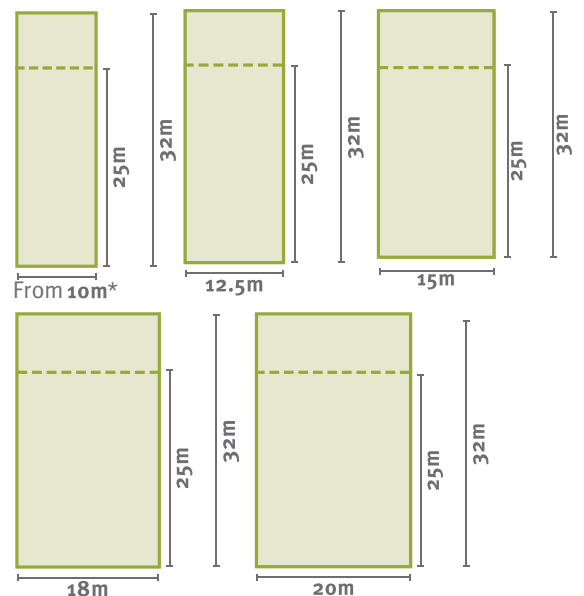
Features:

Future expansion opportunities would include:

| | | | |
|------------------------------|---------------------|--------|--|
| New master bedroom & ensuite | 19.9 m ² | 3 Bed | |
| New outdoor living | 11.2 m ² | 2 Bath | |
| Total: Stage 1 + Stage 2 | 160.6m ² | 1 Car | |

Possible land lot sizes:

The Room to Grow home design has the ability to fit on a variety of lot sizes - refer indicative illustrations below. Please contact an EDQ Sales Professional for current land availability.



*10 metre wide lots: House designs sited on a lot less than 11m wide will require individual assessment and final approval by the EDQ covenant and design team to determine its compliance and suitability.